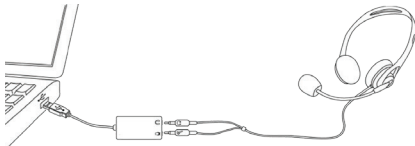
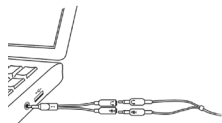


CONNECT YOUR MICROPHONE – important notes:

- When you plug your microphone into your PC, an “**audio event**” window may open. If this happens, verify what is highlighted in that window before closing it.



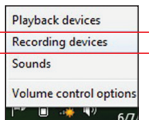
- If you want to bypass your PC’s sound system (or if your PC has only one audio socket), consider using a **USB adapter** or **USB microphone**.



- If your PC has only one audio socket, you can use a Y-shaped adapter.

- If you use a **Bluetooth** microphone, plug its **dongle** into a USB port on your PC. After powering on the headset, make sure it is in **call mode** (see your microphone’s guide).

- Using a **built-in (array)** microphone with Dragon Medical Practice Edition is not recommended.



- You may want to verify the “recording” Sound settings in the **Control Panel** (right-click the speaker icon in the System Tray).

IMPORTANT: If your microphone requires plugging into a USB port, aim to always use the **same port** and **plug in before you open Dragon Medical Practice Edition**.

INSTALL DRAGON MEDICAL PRACTICE EDITION

NOTE: If you have an existing version, we suggest backing up your profile first.

- 1) Exit any open program.** If you’re running an **anti-virus** program, turn it off until after the installation completes.

- 2)** Put the Dragon DVD into your PC (or open the downloaded file) and follow the prompts.

- 3)** Enter the **serial number** found on the DVD sleeve (or, if you purchased a download, in the email you received). Click Next, accepting all the recommended options.

Once installation is finished, make sure your microphone is connected, then start Dragon Medical Practice Edition (double-click its **desktop icon**).

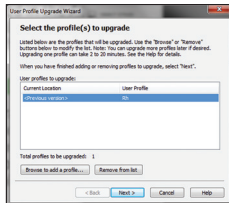


CREATE OR UPGRADE A USER PROFILE

IF YOU ARE NEW TO DRAGON MEDICAL PRACTICE EDITION... A series of screens will guide you to create the best possible profile for you. Don’t rush through it. It will determine your initial accuracy!

Once your profile is created, Dragon Medical Practice Edition offers ways to refine it, including designating **specific text to analyze**.

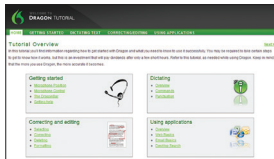
IF YOU USED DRAGON MEDICAL 10 or 11... Dragon Medical Practice Edition will detect profiles on your PC and start its Upgrade Wizard. (If you do not want to upgrade any profile now, close the wizard. You can launch it later from the Start menu.)



IMPORTANT: Once the upgrade completes, we strongly recommend you **launch Accuracy Tuning** (see the **Audio menu**) and read the **What’s New**.

BEFORE YOU START DICTATING...

Go through the **Interactive Tutorial** (its simulations include practice for efficient editing including the “**go back**” command and **smart formatting**).



Then click the DragonBar’s Help menu and see its content, especially the regular Tutorial.

PERSONALIZE YOUR PROFILE’S VOCABULARY

In order to dictate efficiently, you should let Dragon Medical Practice Edition learn what you use: nicknames, jargon, capitalized phrases, email addresses...

Personalizing your Profile will *prevent* many errors.

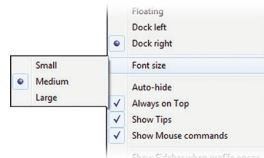
There are several means to do it including having Dragon Medical Practice Edition analyze text similar to what you plan to dictate. See “Improve my accuracy” in the Help menu.

THE DRAGON SIDEBAR

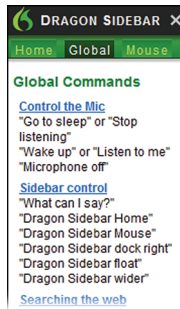
The Sidebar displays tips and sample commands (global and application-specific).

The top pane contains clickable links to related Help topics and tools.

You can open the Sidebar by saying “Open Dragon Sidebar” or “What Can I Say?”



NOTE: Right-clicking the Sidebar displays a menu from which you can hide the Mouse tab, print, and more.



AN IMPORTANT HABIT: CONTROL WHETHER DRAGON LISTENS

One can control Dragon’s microphone by:

- Pressing the + on the numeric keypad (this **hotkey** can be changed in Dragon’s **Options** dialog).

- Clicking the microphone icon on the DragonBar or System Tray.

- Using commands such as “wake up” and “microphone off.”

On: Dragon is listening.



Off: Dragon cannot hear anything.



YOUR FIRST DICTATION

Start a word processor and make sure your cursor is in the document, then turn on the microphone and dictate sentences in a clear and natural voice. Say punctuation and commands like **new paragraph**.

As you dictate, a small Dragon icon indicates that the software is processing. No need to wait for Dragon Medical Practice Edition to “catch up.” Dictate at a natural pace. Aim to speak long phrases, since this gives Dragon Medical Practice Edition some context and leads to much better results than slow, halting speech.

NOTE: Dragon Medical Practice Edition automatically handles a lot of formatting, including spacing, dates and percentages. If you want to capitalize a particular word, say “cap” or “all caps” before it.

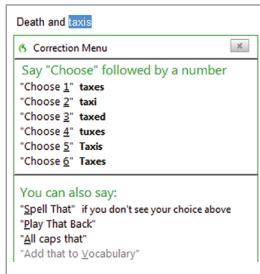
CORRECTING ERRORS

Although personalizing the vocabulary will prevent many errors, some errors are inevitable. By correcting Dragon Medical Practice Edition’s errors, you can help it learn from them. Experiment with *when* and *how* to correct. Dragon Medical Practice Edition lets you do it entirely by voice, but also allows **typing over**, pressing a **hotkey**, and more. (See the Options dialog.)

When Dragon Medical Practice Edition misrecognizes something you dictated, you can say “Correct that” or “**Correct <xyz>**” – <xyz> being the wrong word(s) on the screen.

This will display the **Correction Menu**, which shows a list of alternatives. If what you wanted is on the list, choose it (say for instance “choose 1”).

If not, you can say “Spell that” to open the Spelling window, where you can **spell or type** what Dragon should have recognized or **modify** an alternative that is almost correct.



SHUTTING DOWN DRAGON

It’s useful to **exit Dragon Medical Practice Edition** at least once a day: from the **Profile menu**, choose Exit Dragon.

If a message asks whether you want to save changes to your profile, say yes to preserve the refinements made during your session (such as analyzing text or adding a Spoken Form). Note: Dragon may offer to also perform a **quick optimization** of your profile.

LEARNING MORE

At first, focus on getting used to dictating fluently and **refining the vocabulary**. Over time, you can learn to do more and more by voice.

At any time, you can search the Help with a direct command such as “**Search Dragon Help for hotkey options**.” You can also use Dragon Medical Practice Edition’s Help menu.

Many resources are on the Web including the latest guides, tips, videos, compatible hardware, partners who provide customization services and Support.

