

WHAT YOU SAY	WHAT HAPPENS	WHAT YOU SAY	WHAT HAPPENS
Go To Sleep	Puts the microphone to sleep.	<b>Correction</b>	
Wake Up	Wakes the microphone from sleep.	Correct "text" [through/to "text"]	Invoke the Recognition window to correct <text>
Microphone Off	Turns off the microphone.	Choose "1" or Pick "1"	Replaces selected text with item 1 in Recognition Window.
Dictation Mode	Switches to Dictation mode.	Say That OR Edit "1"	Edit the first item in the Recognition window.
Command Mode	Switches to Command mode.	Spell That	Edit the first item in the Recognition window in Spelling Mode
Show Available Commands Window	Displays a window with a list of commands.	Cancel Edit	Cancels the edited item.
New Line	Presses the Return key once.	<b>Launch Applications</b>	
New Paragraph	Presses the Return key twice.	Open <Application Name> OR Activate <Application Name>	Launch application or switch to application if already open
Press The Key <key>	Presses the Keyboard Key <key>.	<b>Search</b>	
Press The Keys <key combo>	Presses the Keyboard Combination <key>+<key>.	Search Google for <text> Search Bing for <text> Search Yahoo! for <text>	Use Google or Bing or Yahoo! to search the internet for <text> in your default browser
Go To End	Moves to the end of the document.	Search Spotlight for <text>	Search the Spotlight for <text>
Go To Beginning	Moves to the beginning of the document.	<b>Proofreading</b>	
Scratch That or Forget That	Deletes the last thing you said.	Read the Document	Invoke text-to-speech for the current document
Delete "text" [through/to "text"]	Deletes the specified word or words.	<b>MouseGrid &amp; Cursor Movement</b>	
Insert Before/After "text" [through/to "text"]	Moves cursor to just before or after the specified word[s].	MouseGrid	Displays a 3x3 grid overlay over the whole screen. Speak the number of the sector to display a grid within that space. Repeat as necessary
Select "text" [through/to "text"]	Selects the specified word or words.	Move Mouse <direction>	Moves the cursor left, right, up or down
Cap <word>	Starts the next word with a capital letter.	Move Mouse <direction> and <direction>	Moves the cursor diagonally, like "Move Mouse down and left"
Caps On/Caps Off	Turns the Caps On or Caps Off. When on, each word will be capitalized.	Mouse Click	Clicks the mouse
All Caps <word>	Types the next word in ALL capital letters.	<b>Available Commands Window</b>	
All Caps On / All Caps Off	Turns All Caps on or off. When on, each word will be in ALL CAPS.	Show Available Commands Window	Displays the Available Commands Window



## DRAGON DICTATE MEDICAL FOR MAC Quick Reference Card



### Step 1 - Connect Your Microphone

Plug the USB microphone into an available USB port on your Mac.

**DO NOT** plug the microphone into a USB hub.

Check that OS X recognizes your microphone by going to System Preferences >> Sound, Input tab.



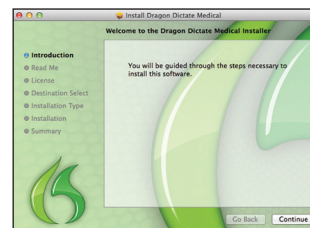
### Step 2 - Install Dragon Dictate Medical

Insert the DVD into your Mac.

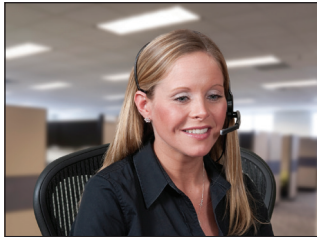


OS X will automatically open the DVD.

Double-click the "Install Dragon Dictate Medical" file to begin Installation.



Follow the instructions in the Installer.



### Step 3 - Position Your Microphone

Make sure that the headset microphone is positioned correctly for best results.

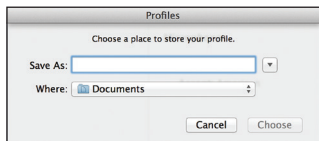
The microphone should be about an inch away from the corner of your mouth.



### Step 4 - Launch Dragon Dictate Medical

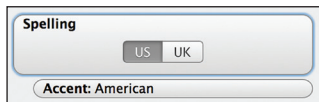
Locate the Dragon Dictate Medical icon in your Applications folder or in Launchpad.

Double-click the icon in your Applications folder or click on the icon in Launchpad to launch Dragon Dictate Medical.



### Step 5 - Create and Train a Profile

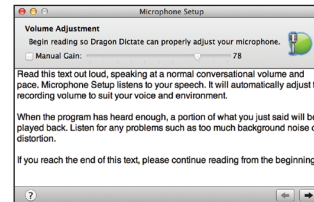
Dragon will ask you to create a Profile. You will be prompted to name your Profile and select a location to save it. Click "Choose" after entering a name and selecting a location.



### Step 6 - Select Spelling and Accent

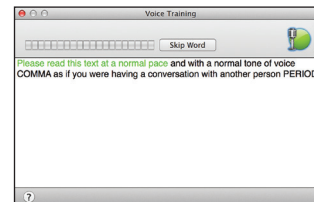
Dragon needs to know how you prefer to spell words, and what particular accent you have.

For English, select US or UK spelling. Based on your spelling choice, select the appropriate accent.



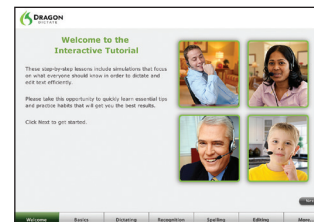
### Step 7 - Microphone Setup

Dragon needs to adjust the microphone level for best results. Read the text out loud and, when Dragon has heard enough, a portion of what you just said will be played back. Listen for any problems such as too much background noise or distortion.



### Step 8 - Voice Training

Dragon will ask you to participate in a quick voice training step. Read the text out loud. Speak at a normal pace and with a normal tone of voice. As you read, text will turn green when it's successfully recognized. If the text turns red, stop, go back and read the text again. If you cannot make the text turn green, use the Skip Word button.



### Step 9 - Interactive Tutorial

The Interactive Tutorial is a great way to become familiar with some of the basic operations of Dragon Dictate Medical. Follow the instructions in the Tutorial.